

Contents

- During the “dissection weekend” there are 6 modules available.



Module 1a: Extremitas superior

Day 1 : 9u00 - 18u00

- Introduction
- Superficial Structures
- Study of the spirals (Fascia, Arteria, Nervus)
- Ontogenesis of the Extremities

Day 2: 9u00 - 18u00

- Blood vessels & nerfs
- Anatomy and the relativity of Origin and Insertion
- Muscle compartments

Day 3: 9u00 - 16u00

- Plexus brachialis
- Arthrology
- Osteology
- Syntheses & Practical application



Module 1B: Extremitas inferior

Day 1: 9u00 - 18u00

- Introduction
- Superficial Structures
- Study of the Spirales (Fascia, Arteria, Nervus)
- Ontogenesis the Extremities

Day 2: 9u00 - 18u00

- Blood vessels & Nerves
- Anatomy and the relativity of Origin and insertion
- Muscle compartments

Day 3: 9u00 - 16u00

- Plexus lumbosacralis
 - Arthrology
 - Osteology
 - Syntheses & Practical application
-



Module 2: Cranium & Neurology

Day 1: 9u00 - 18u00

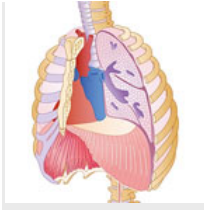
- Introduction
- Topography, Orientation & Nomenclature
- Ontogenesis of the nervous system

Day 2: 9u00 - 18u00

- Blood vessels
- Opinions

Day 3: 9u00 - 16u00

- Ligaments
 - Opercula
 - Syntheses & Practical application
-



Module 3A: Thorax

Day 1: 9u00 - 18u00

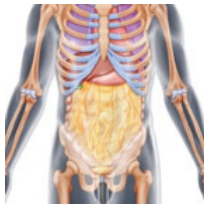
- Introduction
- Superficial structures
- Paramediastinal & frontal study
- Ontogenesis of the heart & lungs

Day 2: 9u00 - 18u00

- Progressive study of the mediastinum (paramediastinal & frontal)
- Autonomous Nerve System

Day 3: 9u00 - 16u00

- Progressive study of the mediastinum (paramediastinal & frontal)
- Micro-Anatomy
- Syntheses & Practical applications



Module 3B: Abdomen

Day 1: 9u00 - 18u00

- Introduction
- Superficial structures
- Paramediastinal & frontal study
- Ontogenesis and nomenclature tractus digestivus

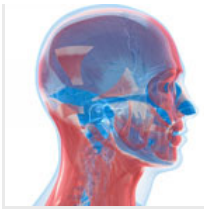
Day 2: 9u00 - 18u00

- Progressive study of the abdominal cavity
- Autonomous Nerve System

Day 3: 9u00 - 16u00

- Progressive study of the abdominal cavity

- Micro-Anatomy
 - Syntheses & Practical application
-



Module 4: Face

Day 1: 9u00 - 18u00

Introduction
Superficial structures

Day 3: 9u00 - 18u00

Regio parotis
Regio jugularis

Day 3: 9u00 - 16u00

Regio tempero-mandibularis
Regio ocularis

Module 5: Spine

Day 1: 9u00 - 18u00

Paravertebral muscles - part 1

Day 2: 9u00 - 18u00

Paravertebral muscles - part 2
Vascularisation - innervation
Ligaments

Day 3: 9u00 - 16u00

Canalis spinalis
Dura mater
Vascularisation



Module 6: Urogenital female pelvis

Day 1: 9u00 - 18u00

Regio retroperitonealis

Day 2: 9u00 - 18u00

Regio pelvis minor - neurovascular

Regio viscerale (vescica urinaria, uterus, rectum)

Day 3: 9u00 - 16u00

Regio diaphragma pelvis